

# Delock USB 2.0 Camera Module with Wide Dynamic Range 1.92 mega pixel 120° fix focus

## Description

This USB 2.0 camera module by Delock offers in a compact construction a high resolution and low power consumption. It is ideally suited for installation in industrial components like **IPCs, embedded systems, sensors** and in **device manufacture**. The use of a photosensitive sensor with back side illumination (BSI) expands the scope of this module.

## WDR - Wide Dynamic Range

It allows the adjustment of the brightest and darkest parts of the image to improve the quality of the still image.



## Specification

- Connector: 1 x 4 pin USB 2.0 pin header female SMT, pitch 1.5 mm
- Pin assignment:
  - Pin 1 - GND
  - Pin 2 - USB D+
  - Pin 3 - USB D-
  - Pin 4 - VCC
- Resolution: 1.92 megapixel
- With optical IR filter
- Maximum resolution: 1920 x 1080
- Automatic image control functions including:
  - Automatic exposure control (AEC)
  - Automatic white balance (AWB)
  - Automatic band filter (ABF)
  - Automatic black-level calibration (ABLC)
- Image quality controls including colour saturation, gamma, sharpness (edge enhancement), lens correction, white pixel canceling, noise canceling, and automatic 50 / 60 Hz luminance detection
- Current consumption:
  - sensor active: 160 mA ± 5 mA @ 1920 x 1080
- Operating voltage: 5 V DC
- Operating temperature: 5 °C ~ 50 °C
- Operating humidity: 0 ~ 80 %
- Sensor size: 1/2.7"
- Fix focus: 10 cm - infinite
- Aperture: F/2,5
- Frame rates:
  - 30 fps @ 1820 x 1080
  - 60 fps @ 1280 x 720
  - 60 fps @ 800 x 600
  - 120 fps @ 640 x 480
  - 120 fps @ 320 x 240
- Dimensions (LxWxH): ca. 38 x 38 x 29 mm

## System requirements

- PC with UVC support
- Linux Kernel 2.6.15 and above with Video4Linux
- Windows 7/7-64/8.1/8.1-64/10/10-64
- DirectX 9.0c or above

## Package content

## Item no. 96389

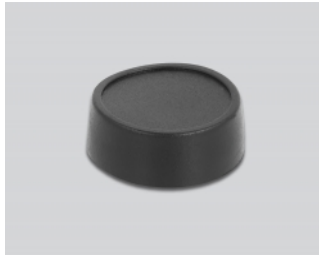
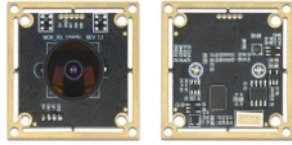
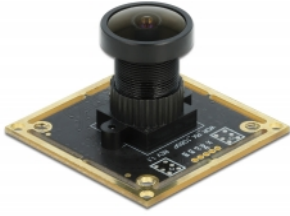
EAN: 4043619963898

Country of origin: China

Package: • Retail Box

- Camera Module

Images



Operation system:	Windows 8.1 64-Bit
	Windows 8.1 32-Bit
	Windows 7 64-Bit
	Windows 7 32-Bit
	ex Linux Kernel 2.6.x
	ex Mac OS 10.4.8
	ex Android 4.0
	Windows 10 32-Bit
	Windows 10 64-Bit

#### Interface

connector:	1 x WTB 1.5 mm Pitch
------------	----------------------

#### Technical characteristics

Operating voltage:	5 V DC
Operating temperature:	-20 °C ~ 60 °C
Maximum screen resolution:	1080p (1920 x 1080)
Sensor Size:	1/2.7"
Current consumption:	130 mA
Resolution:	2.1 megapixel up to 1920 x 1080 @ 30 Hz
Signal noise ratio (SNR):	38.9 dB
Frame rate:	30 fps @ 1920 x 1080, 1280 x 800, 1280 x 720, 1024 x 768, 840 x 480, 640 x 360, 640 x 480, 352 x 288
Fixed focus:	2 cm to infinity

#### Physical characteristics

Length:	38.0 mm
Width:	38.0 mm
Height:	40.0 mm