

Delock Push Button for Installation 12 mm 4 x solder connection LED blue

Description

This push button by Delock is ideal for **installation in control panels**, for example in industry, control or regulation technology. Push buttons can also be found in the **automotive industry** or the consumer sector. For example, as doorbells or triggers for lighting systems with timers such as those found in hallways.



Button

A so called button, or push button, returns to its initial position after being pressed.

Item no. 20984

EAN: 4043619209842

Country of origin: China

Package: Retail Box

Opener and closer

The NO (closer) contact establishes a connection between two contacts, while the NC (opener) contact releases them.

Note

- The installation should only be carried out by qualified electricians in compliance with the usual national power supply guidelines.
- Earthing is necessary for low-voltage systems to ensure the safety and functionality of the system.

Technical details

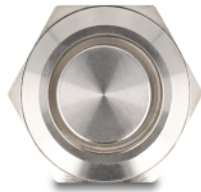
- Connectors: 4 x solder connection
- Switch type: 1NO + 1 NC
- Switching voltage: AC 230 V~ / 3 A
- Number of contacts: 4
- Number of open contact: 1
- Function: momentary
- Actuator: high
- Operating temperature: -25 °C ~ 55 °C
- Mounting hole diameter: 12 mm
- Hexagon nut spanner width: 14 mm
- Mounting depth: ca. 18 mm

- Thread size: M12
- LED lighting: blue
- LED voltage: 12 V
- LED type: ring
- Material: stainless steel nickel plated
- Mechanical life: 1,000,000 cycles
- Electrical service life: 100,000 cycles
- Protection class: IP65
- Dimensions (LxD): ca. 23 x 14 mm

Package content

- Push-button

Images



General

Mounting type:	Soldering
Protection category:	IP65
LED indicator:	ring
Style:	momentary

Technical characteristics

Operating temperature:	-25 °C ~ 55 °C
------------------------	----------------

Physical characteristics

Housing material:	stainless steel nickel plated
Colour:	silver
Thread type:	M12
LED colour:	blue
Mounting hole diameter:	12 mm