

Delock Push Button for Installation 19 mm 4 x Screw Terminal LED blue

Description

This push button by Delock is ideal for **installation in control panels**, for example in **industry, control or regulation technology**. Push buttons can also be found in the **automotive industry** or the consumer sector. For example, as doorbells or triggers for lighting systems with timers such as those found in hallways.



Button

A so called button, or push button, returns to its initial position after being pressed.

Item no. 20980

EAN: 4043619209804

Country of origin: China

Package: Retail Box

Opener and closer

The NO (closer) contact establishes a connection between two contacts, while the NC (opener) contact releases them.

Note

- The installation should only be carried out by qualified electricians in compliance with the usual national power supply guidelines.
- Earthing is necessary for low-voltage systems to ensure the safety and functionality of the system.

Technical details

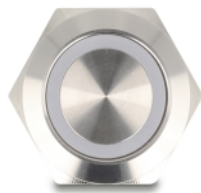
- Connectors: 4 x screw terminal
- Switch type: 1NO + 1 NC
- Switching voltage: AC 230 V~ / 3 A
- Number of contacts: 4
- Number of open contact: 1
- Function: momentary
- Actuator: flat
- Operating temperature: -25 °C ~ 55 °C
- Mounting hole diameter: ca. 19 mm
- Hexagon nut spanner width: 22 mm

- Mounting depth: ca. 28 mm
- Thread size: M19
- LED lighting: blue
- LED voltage: 12 V
- LED type: ring
- Material: stainless steel nickel plated
- Mechanical life: 1,000,000 cycles
- Electrical service life: 100,000 cycles
- Protection class: IP65
- Dimensions (LxD): ca. 30 x 25 mm

Package content

- Push-button

Images



General

Mounting type:	Screw mounting
Protection category:	IP65
LED indicator:	ring
Style:	momentary

Technical characteristics

Operating temperature:	-25 °C ~ 55 °C
------------------------	----------------

Physical characteristics

Housing material:	stainless steel nickel plated
Colour:	silver
Thread type:	M19
LED colour:	blue
Mounting hole diameter:	19 mm